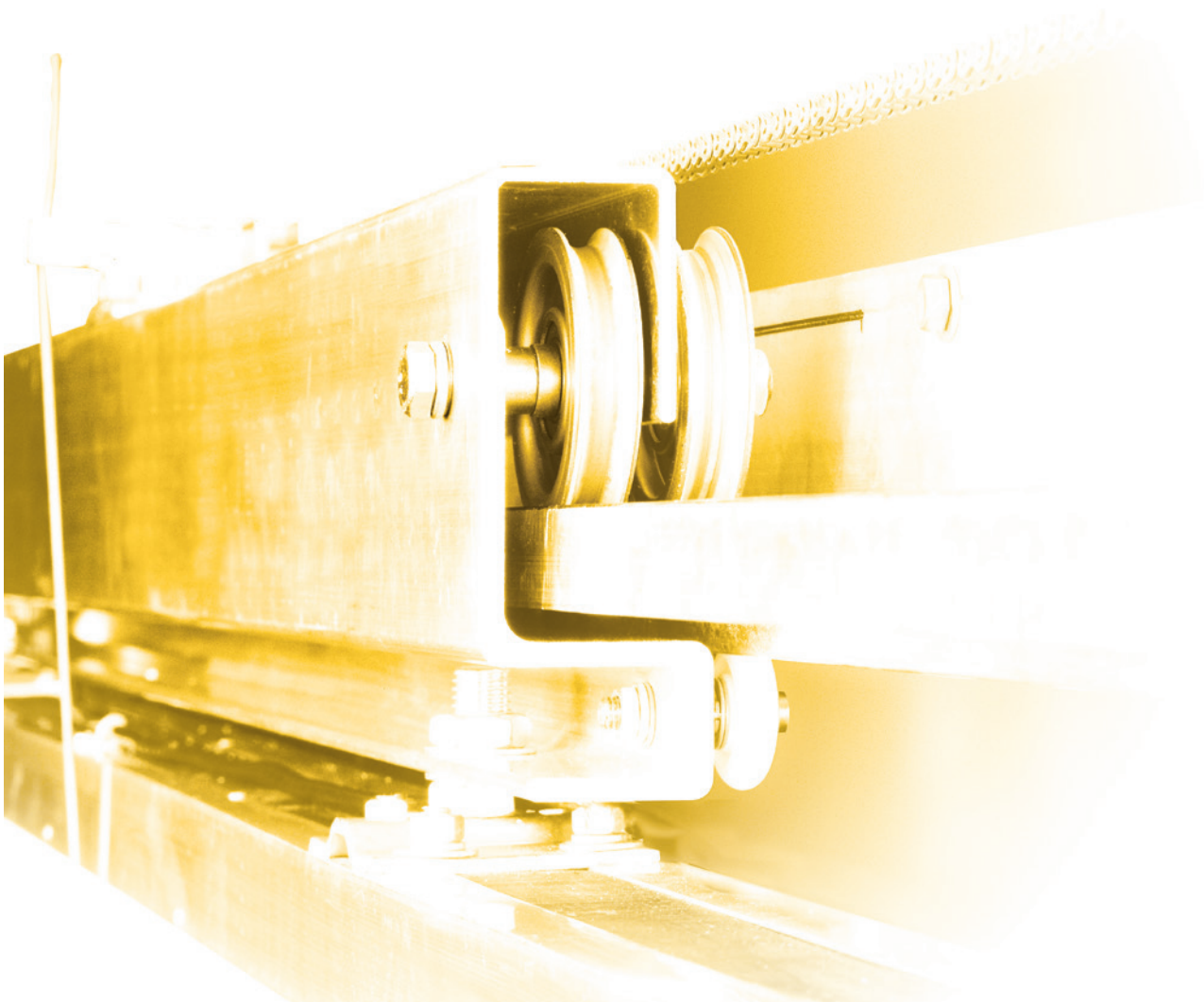




It's Better with Kason.

Sliding Door Systems

1.800.935.2766 | kasonind.com



The Kason Mission

To Protect your Product Integrity

Our customers go to great lengths to build top-of-the-line coolers, freezers, foodservice equipment, industrial enclosures and delivery vans. Our goal is to preserve your product integrity by providing the highest quality door hardware and accessories for both original equipment and replacement applications.

End users need to protect products and processes, and lower operating costs. Their first line of defense is stable, airtight enclosures with doors that open with ease and close securely.

Since 1926, Kason has promised and delivered just that. Kason's extensive lines of walk-in and reach-in door hardware satisfy the most demanding requirements. Demonstrate the value of your products with the most innovative, dependable and longlasting hardware in the business.

Research and Testing

Every Kason product must fulfill our customers' requirements. Before we develop a new product, we research the needs of both our industry and end users. We are never satisfied with the status quo. Our dedicated research and development staff continually search for pioneering design concepts. They insist on engineering integrity, extensive product testing and precise, in-line quality control. That is how we have developed such successful and trustworthy products as SafeGuard® inside releasing safety latches, Pacesetter handles and hinges, stainless steel hinges and latches and truck door handles with removable cylinder locks.

Creative Concepts

Leading equipment manufacturers turn to Kason when they want a unique look of their own. We will adapt a stock product, design custom hardware or partner with your design engineers to develop a signature appearance just for your products. Building special and customized hardware is routine at Kason.

Quality

Kason production facilities boast state-of-the-art installations, featuring fully automated die-casting, polishing and electroplating, as well as a full range of electronically controlled and robotic machinery. We require the finest raw materials, accurate machine tolerances and the highest level of Finishing. Skilled, experienced people maintain the Kason tradition of production excellence. Our unrelenting commitment to superior manufacturing assures you consistently high quality products at the lowest possible cost. Quality assurance is integrated into every step of Kason operations to from engineering research and development through packaging and shipping.

Service

The lifeline to all your foodservice needs is our efficient and friendly Customer Service Department. A representative can quickly track product availability or the status of your order with our computerized inventory and order control system. Count on dependable global delivery as we serve you from Kason distribution centers in the continental United States and Canada as well as through authorized distributors throughout the world.

Our Promise

Satisfying your needs is our top priority. That is why Kason supplies you with hardware and accessories that reflect the same quality you demand in your own products. We strive to demonstrate an attitude that makes you want to do business with us. At Kason we offer a tradition of excellence, a philosophy of innovation and the most trusted name in specialty commercial hardware.

Kason Contacts

USA Sales & Distribution Centers

1.800.93KASON (800.935.2766)

Kason Industries, Inc.

Global Headquarters

57 Amlajack Boulevard | Newnan, GA 30265-1015, USA
800.935.3550 | FAX: 770.251.4854
Info@kasonind.com

Kason Foodservice Division

31 Amlajack Boulevard | Newnan, GA 30265-1015, USA
866.231.2157 | FAX: 770.252.8397
FoodService@kasonind.com

Kason International Division

57 Amlajack Boulevard | Newnan, GA 30265-1015, USA
770.304.3000 | FAX: 770.251.4854
International@kasonind.com

Kason Vinyl Division

31 Amlajack Boulevard | Newnan, GA 30265-1015, USA
800.472.7450 | FAX: 770.252.8397
Vinyl@kasonind.com

Kason Canada Branch

226 Industrial Pkwy North, Unit 2 | Aurora, Ontario, L4G 4C3, Canada
905.713.6515 | FAX: 905.713.6518
Canada@kasonind.com

Kason Central Branch

8889 Whitney Drive | Lewis Center, OH 43035-7106, USA
740.549.2100 | FAX: 740.549.0701
Central@kasonind.com

Kason Mid-America Branch

1239 Atlantic Avenue | Kansas City, MO 64116-4141, USA
816.472.7450 | FAX: 816.472.8580
MidAmerica@kasonind.com

Kason Western Branch

1500 East Wooley Road, Suite E
Oxnard, CA 93030-7385, USA
805.247.1088 | FAX: 805.247.1164
Western@kasonind.com

Catalog Icons



Walk-In



Casters & Caster Legs



Vinyl



Plumbing



Sliding Doors



Cabinet & Cafeteria



Lighting & Electrical



Canopy Hood



Reach-In



Fabrication Supplies



Equipment Legs



Truck Body



Table of Contents

8100 Series Accessories 139

8100 Series Premium Track System 138

8100 Styliner Systems 136

8200 Series Spacesaver Doorware 132

8600 Accessories..... 145

8600 Bi-parting System Ordering Guide 146

8600 EZ Doorware Power Drive 144

8600 EZ Power Accessories 145

8600 Series Premier Doorware (Heavy-Duty) 142

8600 Series Premium Track System 143

8600 Single Door System Ordering Guide 146

Door Guides for 8100/8600 Doorware Systems 140

Equivalent Cost to Install and Lower Maintenance Expense 135

Gasket Kits for 8100/8600 Doorware Systems 141

Unique Gasket Systems 134

8200 Series Spacesaver Doorware



Two Exceptional Systems

Standard Spacesaver: The open door stops in any position.

Self-Closing Spacesaver: The door recloses from any partially open position; holds in fully open position.

Space-Saving Manual Operating Systems For Horizontal Sliding Entry Doors Put Wasted Space and Dollars To Work

What is the cost of living with dead space — that wasted floor space where swing doors open and close? We calculate that it is costing you about 28 sq. ft. for every 48" wide door. Every 48" swing door can cost nearly \$1500 in unproductive space every year, year after year, based on average annual operating cost of \$52 per square foot.

Now, reclaim that wasted space. Put it to work supporting sales, when you replace swing doors with sliding doors fitted with Kason 8200 Doorware systems. Retailers, wholesalers and distributors can use that reclaimed space for additional equipment, storage, or to leave aisles clear for more efficient operation.

Features

Track & Cover

Corrosion resistant aluminum material for strength and durability

End Caps

Protect mechanism and act as door stops

Door Hangers

Maximize stability and simplify door adjustment

Gasket Kits

Appropriate radius corner cooler or freezer gasket kit

Door Pulls

Exterior handle and interior recessed handle supplied

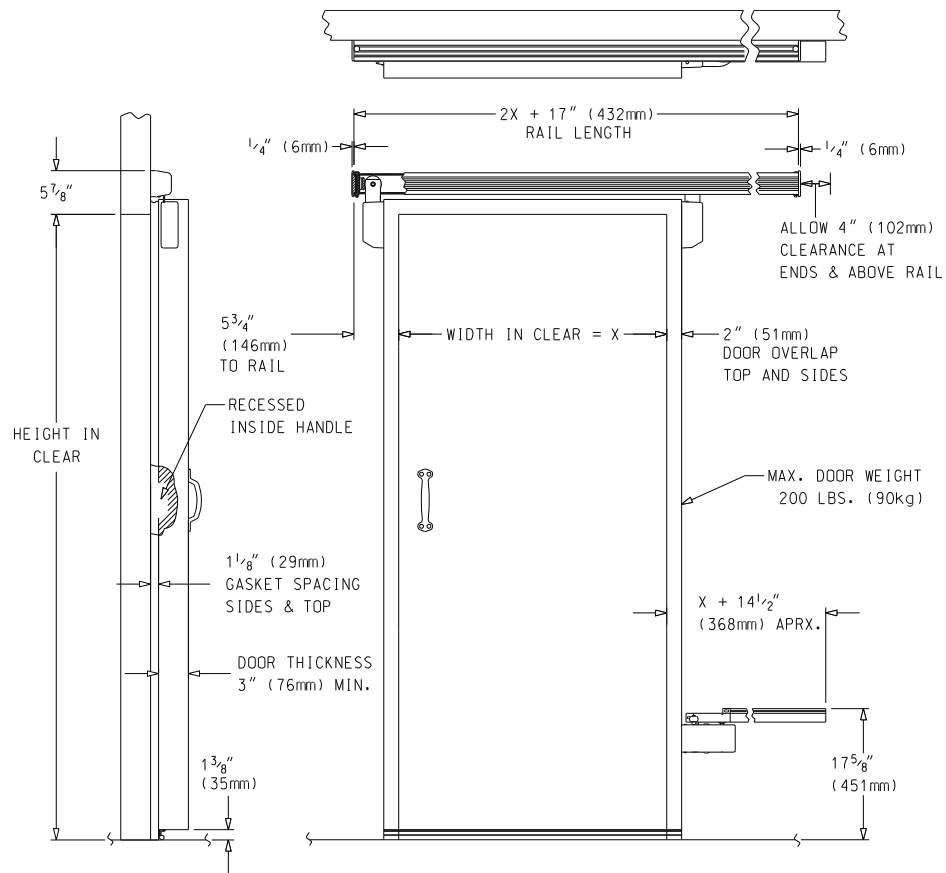
Reclaimed Space

Every 4-ft. wide sliding door with an 8200 Spacesaver Doorware system reduces dead floor space by minimum 28 sq. ft., compared to the same size swing door

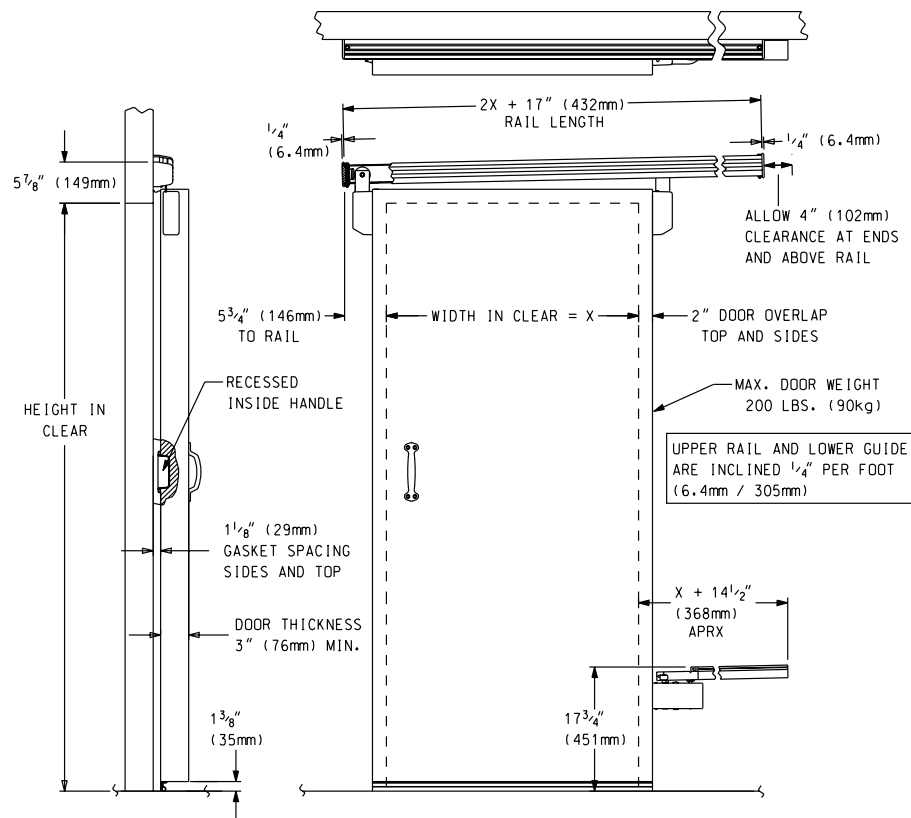
Lower Guide

Integral, wall-mounted, spring-loaded guide assures full closure and tight seal against gaskets



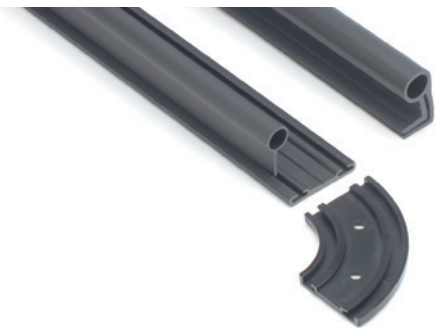


8200 Self-Closing System



Unique Gasket Systems

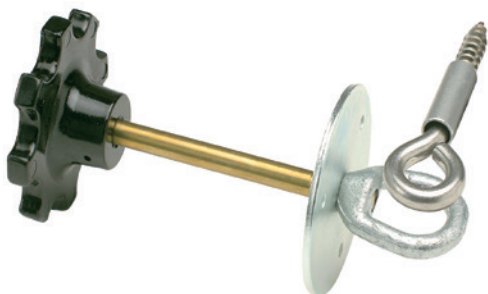
8200 Cooler Gasket



8200 Freezer Gasket



Padlock Hardware



Unique Gasket Systems

Tough gasket channel features pre-molded radius corners for easy gasket installation; eliminates mitering and corner joints. Simply install channel and insert gasket. Order appropriate gasket kit for your application:

- **Cooler Kit** includes gasket channel with radius corners, gasket material and sweeper
- **Freezer Kit** includes gasket channel with radius corners, double gasket material, double floor sweeper and aluminum heater channels with covers. (Electric heater cables are not included; contact your Kason Customer Service Representative for more information.)

Optional Equipment

Locking Mechanism Accepts 5/16" (8 mm) dia. shank Master #1 LJ padlock (not included).

Foot Treadle Allows hands-free door opening. Low-profile requires minimum space. Installs on leading edge of door.

8200 Spacesaver Ordering Guide

8200 Basic Track System

Track with hardware

- Door hangers with covers (2)
- Lower wall guide
- Outside and inside handles
- Gasket set

8200 Doorware Specifications

Material

Metal parts are aluminum, stainless steel, bronze, or plated steel for corrosion resistance. Resilient, flexible vinyl gasket tested per ASTM Standard E4257

Size

Pre-cut track and mechanism for door openings up to 60" (1524 mm) wide

Adjustment Range

Roller brackets adjust 3/4" (19 mm) vertical and 1/2" (13 mm) in and out

Door Handles

Outside handle and inside recessed handle supplied

Mounting

Track and lower guide mount to wall. Detailed installation instructions supplied

Door Specifications

Type

Single horizontal

Operation

Manual sliding

Weight

Max. 200 lb (90 kg)

Thickness

3" (76 mm) or greater

Opening Height

Standard gaskets available for heights up to 84" (2134 mm). Gaskets for taller door openings may be special-ordered through your Kason representative.

Covered Track and Gasket



- 8200 system replaces a standard swing door at virtually the same installed cost
- Engineered for low maintenance with durable, corrosion-resistant materials and simple mechanisms
- Micro-leveling simplifies vertical door adjustment and, combined with the lower guide system, holds the door shut with positive gasket seal, reducing the energy cost of leaky doors
- Sliding door systems won't sag like swing doors
- Mechanical systems are protected from dirt and moisture damage with easy-to-clean covers

Reduced Liability

- 8200 Doorware systems eliminate swinging door accidents and injuries
- Hanging system wheels are fully contained so the door cannot derail
- The lower wall guide system leaves the floor clear of obstructions and retains the door in the desired position
- Dual function rail end caps act as door stops at the ends of travel

Open Track and Door Hanger



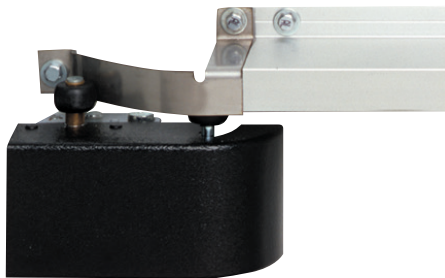
Easy Installation

- The 8200 system installs quickly with pre-fabricated door panels
- Strong, corrosion-resistant aluminum track mounts directly to the wall
- Side-mounted hangers reduce door framing requirements
- Pre-molded, radius corner gasket channel makes gasket installation easier; no gasket corners to miter and join
- No external door stops are needed

Smooth Operation

- Door hangers glide easily on ball bearing and molded nylon rollers
- Self-activating lower guide assures smooth door travel and positive seal
- Side-mounted door hangers maximize stability and simplify adjustments

Lower Guide



Exclusive, Self-Activating Wall Guide

- Lower guide system mounts to the door and wall, leaving floor free of obstructions
- Spring-loaded design ensures full door closure and a tight seal
- Holds door shut against pressure surges inside the enclosure
- Smoothly releases gasket seal and guides door to open position

8100 Styliner Systems



8100 End View With Covers



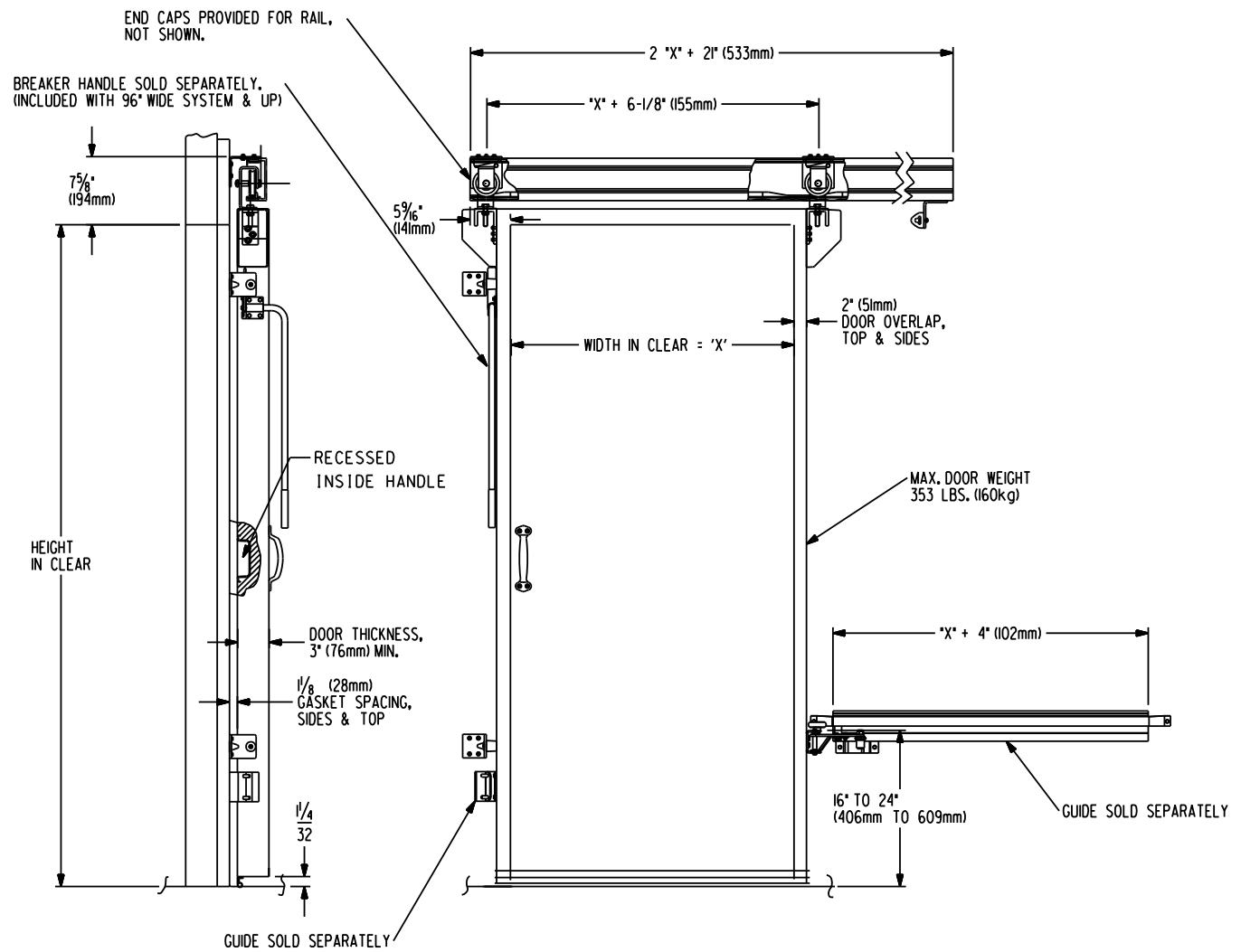
8100 End View Without Covers



This deluxe version adds style and protection to the basic 8000 Doorware system. Get all the exceptional features and operating ease of the 8000 Premium with the extra advantage of durable, black powder coated end caps and sleek, textured hanger covers to enhance the appearance and further protect the operating mechanism.

8100 Styliner Basic Track System Ordering Guide

- All 8000 System parts, plus Styliner edge-mounting hanger assemblies (2)
- Styliner rail end caps (2)
- Styliner hanger assembly covers (2)



8100 Series Premium Track System

Track Side View



Door Hanger

Track System Features

- Attractive, rigid aluminum outer rail encloses and protects rollers and track
- Rail and track are durable, corrosion-resistant extruded aluminum for quick response and straight, sure tracking
- Track ramps are tough, smooth acetal for long wear and easy-sliding doors
- Hanger glides smoothly on large diameter nylon-clad, hardened steel ball-bearing rollers
- Anti-lift feature prevents derailing and deters forced entry when door is locked
- Adjustable, side-mounted door hangers reduce framing requirements, maximize stability and simplify door adjustments; adjustment range is 7/8" (23 mm) vertical and 5/8" (16 mm) in-and-out
- Micro-leveling allows for vertical door adjustment to maintain door seal; adjustment nuts are easy to access
- Extra-duty steel door stops with rubber bumpers cushion door at ends of travel
- Large exterior chrome plated pull handle and recessed inside pull handle are standard

Operation and Maintenance

- Sure closing door rolls "down-and-in" to close with a positive seal against the gaskets
- Easy opening with one pull
- Engineered with high-quality materials and simple mechanisms for minimum maintenance

Mounting

- Systems 8000 and 8100 require a user supplied sub-frame

Door Stop



Outside Pull Handle



Accessory Equipment

8000 Lever Handle (left) of stainless steel provides additional mechanical assistance to open large doors. Standard with systems for 96" (2438.4 mm) wide and larger doors. Optional on smaller systems.

8600 Lever Handle (left) optional for use on heavier doors.

Padlocking Kits are available for floor or wall guides to secure manually operated doors. Padlocking hardware accepts 5/16" (8 mm) diameter shank padlock and features an inside safety release. Kit consists of a tongue that mounts to leading edge of the door and a strike which mounts to the wall. (Padlock not included.)

Rail End Caps of black powder coated steel snap on to ends of rail to fully enclose the operating system. (Standard with 8100 System, optional with 8000 System.)

8100 Premium Basic Track System Ordering Guide

- Rail for selected width
- Pre-cut track and ramps
- 8100 edge-mounting hanger assemblies (2)
- Outside pull handle
- Inside recessed pull handle
- End stops (4)
- Lever handle included with 96" and wider systems

To Order A Complete System:

- Basic or Premium Styliner Track System; specify door opening
- Lower Guide
- Gasket Kit
- Optional Accessories

8000 Lever Handle



8600 Lever Handle



Rail End Cap

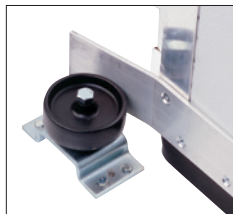


Padlock Kit



Door Guides for 8100/8600 Doorware Systems

8600-040 Heavy-Duty Floor Guide



Four lower guide options offer choices to satisfy just about any requirement. Select the appropriate lower guide for your application.

8600-040 Heavy-Duty Floor Guide secures large doors in heavy traffic areas. Use with single or bi-parting doors. Features 4" (101 mm) diameter, fully adjustable floor-mounted roller and door-mounted wedge plate.

8600-041 Wide Door Heavy-Duty Floor Guide provides greater stability for wide doors. Consists of heavy duty floor guide with additional roller for leading edge of single door 96" (2438 mm) wide or wider.

8600-042 Tight Seal Heavy-Duty Floor Guide



8600-042 Tight Seal Heavy-Duty Floor Guide assures ultimate gasket seal for single door freezers and dock doors. Includes single roller heavy duty floor guide with leading edge door-stay to assure ultimate gasket seal. Door-stay consists of wall-mounted strike and door-mounted tongue.

8000-180 Wall Mount Guide takes all barriers off the floor, provides stability and door guidance. Wall-mounted extruded aluminum rail firmly guides the door for smooth operation. Includes door bracket with roller and leading edge door-stay. Recommended for all bi-parting doors and for locations with uneven floors. Specify door width when ordering.

8600-041 Wide Door Heavy-Duty Floor Guide



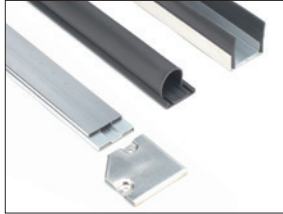
8000-180 Wall Mount Guide



Radius Corner Freezer Gasket



Standard Freezer Gasket



Radius Corner Cooler Gasket



Standard Cooler Gasket



Kason gasket kits come to you ready to trim and mount to your doors. Material is resilient, flexible vinyl tested per ASTM Standard E4257. Gasket retainer strips for top and sides of door are low-conductive, rigid PVC to minimize condensation.

Standard gaskets maintain firmest seal. Radius corner gaskets reduce required opening and closing force.

Standard Cooler/Industrial Gasket Kit consists of large bulb single sweeper gasket, two vertical and one horizontal gasket retainers of rigid PVC to minimize condensation, and gasket to seal top and sides of door.

Standard Freezer Gasket Kit includes double floor sweeper with "U" channel aluminum retainer to accommodate heater, and bulb gasket with retainer for top and sides of door.

Radius Cooler/Industrial Gasket Kit includes gasket channel with pre-molded radius corners, gasket material and sweeper.

Radius Freezer Gasket Kit includes gasket channel with radius corners, gasket material, double floor sweeper to accommodate heater, and aluminum heater channels with covers.

Electric heater cables are not included; contact your Kason Customer Service Representative for more information.

8600 Series Premier Doorware (Heavy-Duty)

8600 Single Door System



8600 Bi-Parting Door System



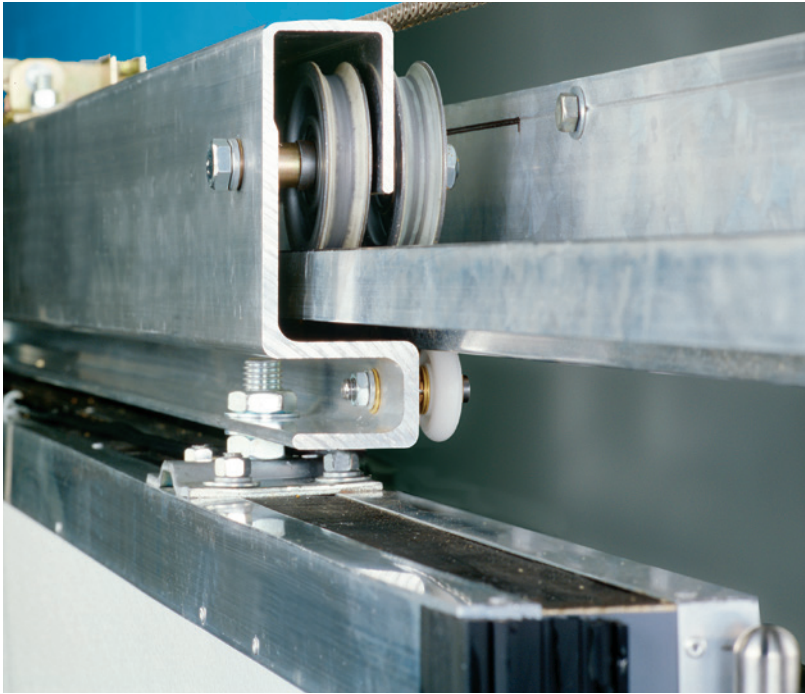
8600 Premier Doorware

- 8600 Single Door - Manual
- 8600 Single Door - Power Operated
- 8600 Bi-Parting Door - Manual
- 8600 Bi-Parting Door - Power Operated
- Systems for freezer, cooler, cold storage, warehouse and industrial applications
- Pre-assembled trolley unit simplifies installation, operation and maintenance
- Exclusive integrated design assures smooth-riding, solid-closing doors that stay on track
- Modular equipment lets you configure the systems you need for single or bi-parting doors with manual or power operation
- Heavy duty hardware system carries weight up to 440 lb (200 kg) per door section
- Four lower guide options provide choices to satisfy the most demanding environments
- Select from multiple power drives and accessories to automate your systems

Develop Your Own System

Contact a Kason Customer Service Representative who will help you specify a system to meet your needs.

Trolley System



8600 Track System Features

- Pre-assembled one-piece trolley assembly features heavy extruded aluminum chassis with heavy-duty 3-1/2" (89 mm) diameter nylon-clad stainless steel ball bearing rollers.
- Built-in anti-lift feature and deep-seated rollers prevent derailing and provide stability
- Rail and track are rugged, corrosion-resistant extruded aluminum for quick response and straight, sure tracking even with maximum door load
- Track ramps are tough, smooth acetal for long wear and easy-sliding doors
- "Down-and-in" action provides easier door operation, yet ensures a tight door seal in combination with the selected lower guide option
- Supplied solid steel hangers are built into your top-hung door frame for security and stability
- Micro-leveling allows for vertical door adjustment to maintain door seal, even where floors are uneven or after sweeper gasket is worn. Adjustment nuts are located up front for easy access
- Heavy-duty steel door stops with resilient bumpers cushion door at ends of travel
- Long stainless steel lever handle provides exterior assist for manual door operation. Standard with single door systems
- Large exterior pull handle is standard for all models (chrome-plated, die-cast zinc)
- Steel recessed inside pull handle is included with all models

Door Lever Handle



Door Stop



Mounting

8600 systems require a user supplied sub-frame for door thickness 3-1/2" (89 mm) or more

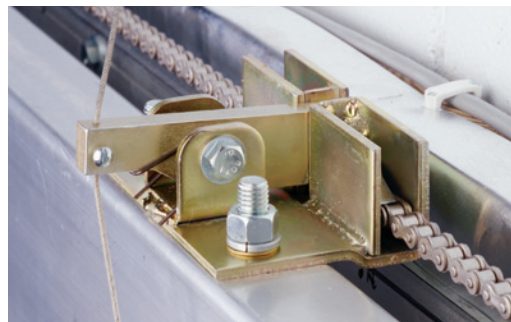
Exterior Pull Handle



Interior Recessed Handle



8600 EZ Doorware Power Drive



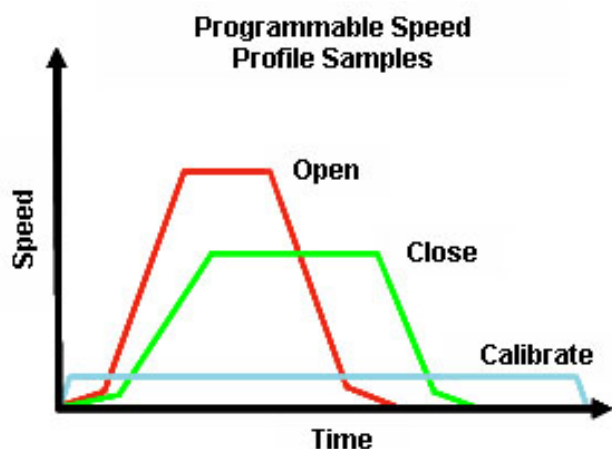
Includes chain-disconnect mechanism for manual operation during power outage.

Complete System

Innovative EZ mounting power door drives are your best bet for easy installation and smooth operation. Kason supplies the complete system. Just add power.

Features

- Motor: DC high torque Stepper motor
- Opening speed adjusts up to 36" per second
- Automatic or manual door size calibration
- (7) programmable inputs for loop sensors, ultrasonic sensors, radio control, motion sensors, timers, and more.
- Adjustable time delay automatically recloses door after selected delay time
- Man-door option opens door only 36" and recloses
- 24 VAC to power accessories
- Electronic overload protection; no mechanical clutch required
- Cycle counter
- Openings from 3' (0.91 m) to 16' (4.9 m)



Specifications

Electrical

Voltage: 115, 208, 230, 460, 575 VAC Single 60 Hz (Optional 50 Hz)

Environment

-20°C to 50°C

Output torques

Up to 400 in./lb
RPM: 200 max.

NEMA Rating:

Motor: NEMA 4
Controller: NEMA 1
(Optional: NEMA 4)

UL - ULC Listed

8600 EZ Power Drive Benefits

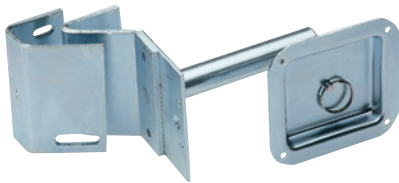
- Easy, speedy installation and servicing. Compact high torque gear motor and control module require less space and mount quickly
- Automatic force sensing protects door and operator. Auto door travel sensing – no limit switch required
- Adjustable time delay for automatic door closing to save energy
- Zero maintenance, light weight aluminum motor
- Panel mounted OPEN, CLOSE, STOP buttons
- Universal voltage connection



Single Padlocking Kit

Locking Mechanism

Accepts 5/16" (8mm) dia. shank Master #1LJ padlock (not included).



Inside Lever

Inside Lever Handle

Assists in opening large single doors from inside.



8600 EZ Power Accessories

Sensing Edge



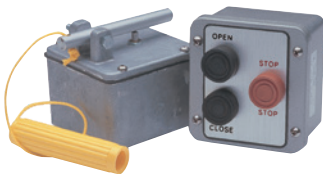
Safety Sensing Edge

Touch-activated sensing device signals power unit to stop and reverse motor. Fail-safe feature stops motor if safety edge is damaged.

Note: Kason recommends use of edge-sensing or photoelectric device on all power-operated sliding doors.

Three-Button Control Station Weatherproof push button control station for use in cold and wet environments. Features OPEN, CLOSE, and STOP control buttons in NEMA 4 plastic enclosure. May be used in tandem with supplied standard station.

Lanyard and Controls

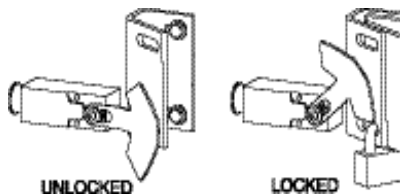


Lanyard (Pull-Cord) Switches

Mount switches inside and outside of door. Pull-cords provide easy operation for material handling vehicle driver. Switches are housed in moisture-proof enclosures, and pull cords and handles are made of high-visibility, rot-resistant materials.

Padlock Switch Kits Deactivate power when door is padlocked. Available for single and bi-parting systems.

Single Padlock Switch



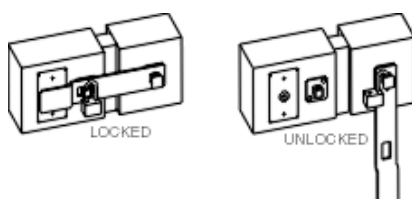
Safety Feature

All 8600 Systems include a safety switch to prevent motor from operating when door is not engaged with chain, reducing field maintenance calls.

Other Popular Power Accessories

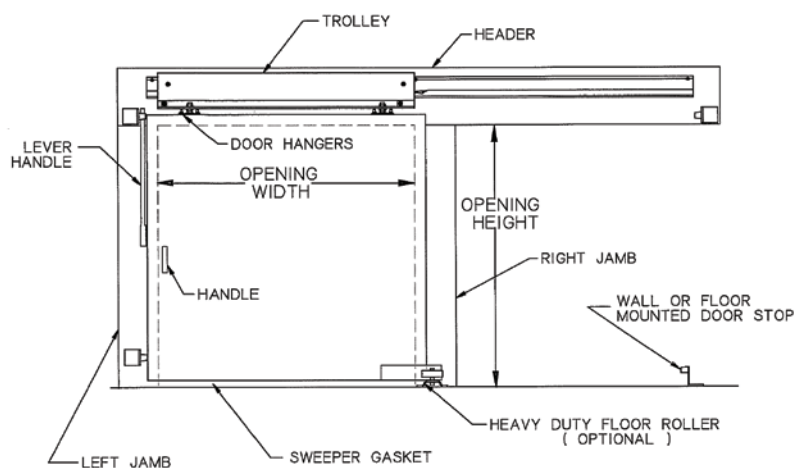
- Heated lanyard switch
- Radio remote controls
- Photoelectric controls
- Vehicle loop detector
- Mid-stop modification for standard power drive (Factory installation required)
- Timed close module for standard power drive
- Motion sensor

Bi-Parting Padlock Switch



Contact a Kason Customer Service Representative for more information about these and other power accessories.

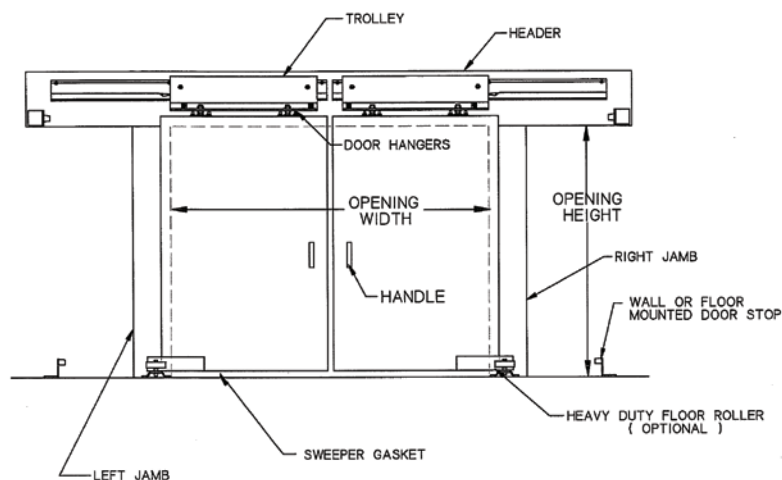
8600 Single Door System Ordering Guide



Single Door System Includes

- Rail for selected door width
- Pre-cut track and ramps
- Pre-assembled trolley
- Hanger assemblies (2)
- Door stops (4)
- Outside pull handle
- Outside lever handle
- Inside recessed pull handle

8600 Bi-parting System Ordering Guide



Bi-Parting Door System Includes

- Rail for selected door width
- Pre-cut track and ramps
- Pre-assembled trolleys (2)
- Hanger assemblies (4)
- Door stops (4)
- Outside pull handles (2)
- Inside recessed pull handle