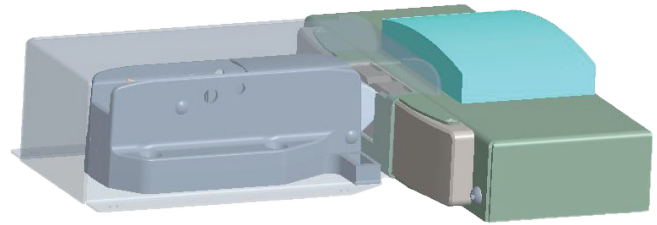


## 0058E SafeGuard® Security Latch with Electronic Flush Strike

Part Number: 10058E\*



### INGRESS/EGRESS

Users inside the enclosure always have a free exit. In the case of a power outage to the latch, the door will become unlocked from the outside if wired as Fail Safe, and alternatively will remain locked on the outside if wired as Fail Secure.

### MATERIALS

- **Base Plate:** Steel
- **Top Cover:** 300 series stainless steel or powder coated steel
- **Latch Cover:** 300 series stainless steel or powder coated steel
- **Latch Spacer:** Gray ABS
- **Latch Insert:** Gray ABS
- **Anti-Pick Plate:** 300 series stainless steel
- **Hardware:** Stainless steel
- **0058 Latch:** Zinc die-cast and stainless steel
- **Electric Strike:** Assa Abloy 9600 Stainless steel
- **Card Reader HID:** See table for model number

Part No.*	Description	Wgt./ Carton
10058E00000	Latch with Electric Strike, Flush, Standard Card Reader	7 lb (3.2 kg)
10058E01000	Latch with Electric Strike, Flush, Bluetooth Card Reader	7 lb (3.2 kg)
10058E03000	Latch with Electric Strike, Flush, No Card Reader, Stainless Steel	6.4 lb (2.9 kg)
10058E03000W	Latch with Electric Strike, Flush, No Card Reader, White	6.4 lb (2.9 kg)
10058ER2000	Latch with Electric Strike, Retrofit Flush, No Card Reader, Stainless Steel	6.5 lb (3 kg)
10058ER2000W	Latch with Electric Strike, Retrofit Flush, No Card Reader, White	6.5 lb (3 kg)

The Kason 0058E Security Latch is the newest line of defense in securing your walk-in contents. It easily integrates with your existing security system to meet your access and control needs. This unique solution utilizes Kason mechanical latches and inside release systems designed specifically for walk-in applications.

- **Add access control and security to your walk-in**
- **Integrates with existing security systems**
- **Durable low maintenance construction**
- **Assures easy exit at all times**
- **Utilizes high-security industry standard UL Certified electronic strike**
- **Overlapping cover design provides increased tamper resistance**
- **Accepts card readers intended for standard junction box mounting**
- **Requires use with Kason inside release models: 0481C, 0482C, 0486C, 0487C, 0488C, and 0489C**
- **Temperature Range: -31°F to 150°F (-35°C to 66°C)**