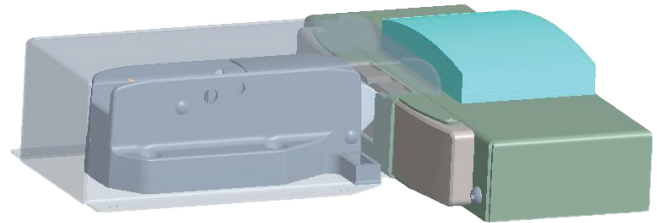


0058E SafeGuard® Security Latch with Electronic Flush Strike

Part Number: 10058E*



INGRESS/EGRESS

Users inside the enclosure always have a free exit. In the case of a power outage to the latch, the door will become unlocked from the outside if wired as Fail Safe, and alternatively will remain locked on the outside if wired as Fail Secure.

FEATURES

- Kason SafeGuard® latch with inside release (sold separately) assures easy exit at all times
- Stainless steel and powder coated steel construction with stainless steel hardware provide durability and low maintenance
- Utilizes high-security industry standard UL Certified electronic strike
- Overlapping cover design provides increased tamper resistance
- Accepts card readers intended for standard junction box mounting

MATERIALS

- **Base Plate:** Steel
- **Top Cover:** Optional 300 series stainless steel or powder coated steel
- **Latch Cover:** Optional 300 series stainless steel or powder coated steel
- **Latch Spacer:** Gray ABS
- **Latch Insert:** Gray ABS
- **Anti-Pick Plate:** 300 series stainless steel
- **Hardware:** Stainless steel
- **0058 Latch:** Zinc die-cast and stainless steel
- **Electric Strike Assa Abloy 9600:** Stainless steel
- **Card Reader HID:** See table for model number

ELECTRICAL

- **Required Power for Card Reader:**
65 mA @ 16 VDC, 5-16 VDC operating voltage
- **Electric Strike Power Required:**
0.45/0.25 A @ 12/24 VDC at continuous duty

DESIGN CRITERIA

- Electric strike can be set to either Fail Safe or Fail Secure
- Use with Kason models 0481C, 0482C, 0486C, 0487C, 0488C, and 0489C inside releases
- **Temperature Range:** -31°F to 150°F (-35°C to 66°C)
- **Mounting Hardware:** Designed for (6) 1/4" dia. hex head fasteners and (4) #10 dia. tamper-proof screws (not included).

Warning: To ensure safe installation follow instructions enclosed within product shipping carton

Part No.*	Description	Wgt./ Carton
10058E00000	Latch with Electronic Strike, Flush, Standard Card Reader	7 lb (3.2 kg)
10058E01000	Latch with Electronic Strike, Flush, Bluetooth Card Reader	7 lb (3.2 kg)
10058E03000	Latch with Electronic Strike, Flush, No Card Reader, Stainless Steel	6.4 lb (2.9 kg)
10058E03000W	Latch with Electronic Strike, Flush, No Card Reader, White	6.4 lb (2.9 kg)
10058ER2000	Latch with Electronic Strike, Retrofit Flush, No Card Reader, Stainless Steel	6.5 lb (3 kg)
10058ER2000W	Latch with Electronic Strike, Retrofit Flush, No Card Reader, White	6.5 lb (3 kg)

0058E SafeGuard® Security Latch with Electronic Flush Strike

Part Number: 10058E*

