

# 1847 Intelli-Vent® High-Flow Pressure Relief Port

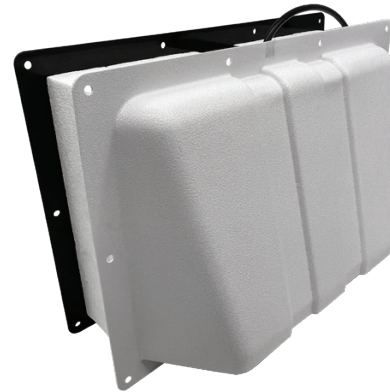
Part Number: 11847000004/6

## FEATURES

- High-flow capacity for walk-in freezers and coolers
- Dual port staged valves adjust to airflow requirements
- Heater coupled directly to louver for improved frost resistance
- Rated to -30°F internal temperature of freezer
- Consumes less energy than competitive models of same airflow capacity
- Retrofittable with Kason 1845 Pressure Relief Ports

## MATERIALS

- **Front Cover:** Black ABS
- **Heated Cover:** Gray polycarbonate
- **Heated Louver:** Die cast aluminum
- **Heater Sleeve:** Gray ABS
- **Louver Exterior:** White ABS
- **Valve:** Gray ABS
- **Retaining Wheel:** 300 series stainless steel
- **Barb Lock Stud:** Steel, commercial zinc plate
- **Label:** Brushed Aluminum
- **Screen:** Aluminum
- **Bracket:** Black polycarbonate
- **Screw and Washers:** Zinc plated steel
- **Heater:** Wire wound silicone rubber encased element, or etched printed element encased in polymer thick film

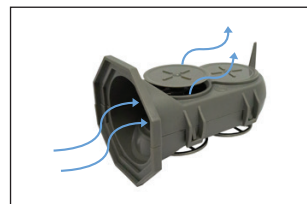
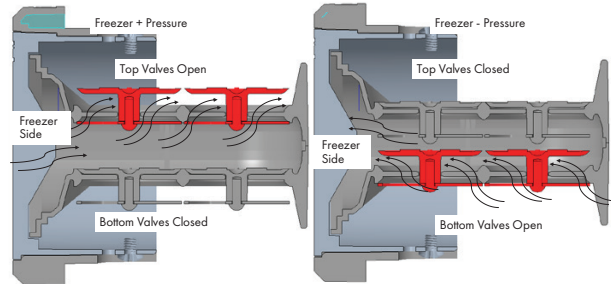


## DESIGN CRITERIA

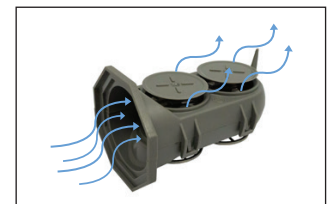
- **Temperature Range**  
-30°F to 40°F (-34°C to 4.4°C)
- **Power**  
120 VAC, 50/60 Hz, 56 W, 0.5 Amp  
230 VAC, 50/60 Hz, 56 W, 0.25 Amp
- **UL Listing**  
File No.: 57306

Part No.	Description
11847000004	Pressure Relief Port, 120 VAC, 4-12" Wall Thickness
11847000006	Pressure Relief Port, 230 VAC, 4-12" Wall Thickness

## Kason® Intelli-Vent® Dual Airflow Design



Intermediate Flow



High Flow



1847 Intelli-Vent® High-Flow Pressure Relief Port

Part Number: 11847000004/6

